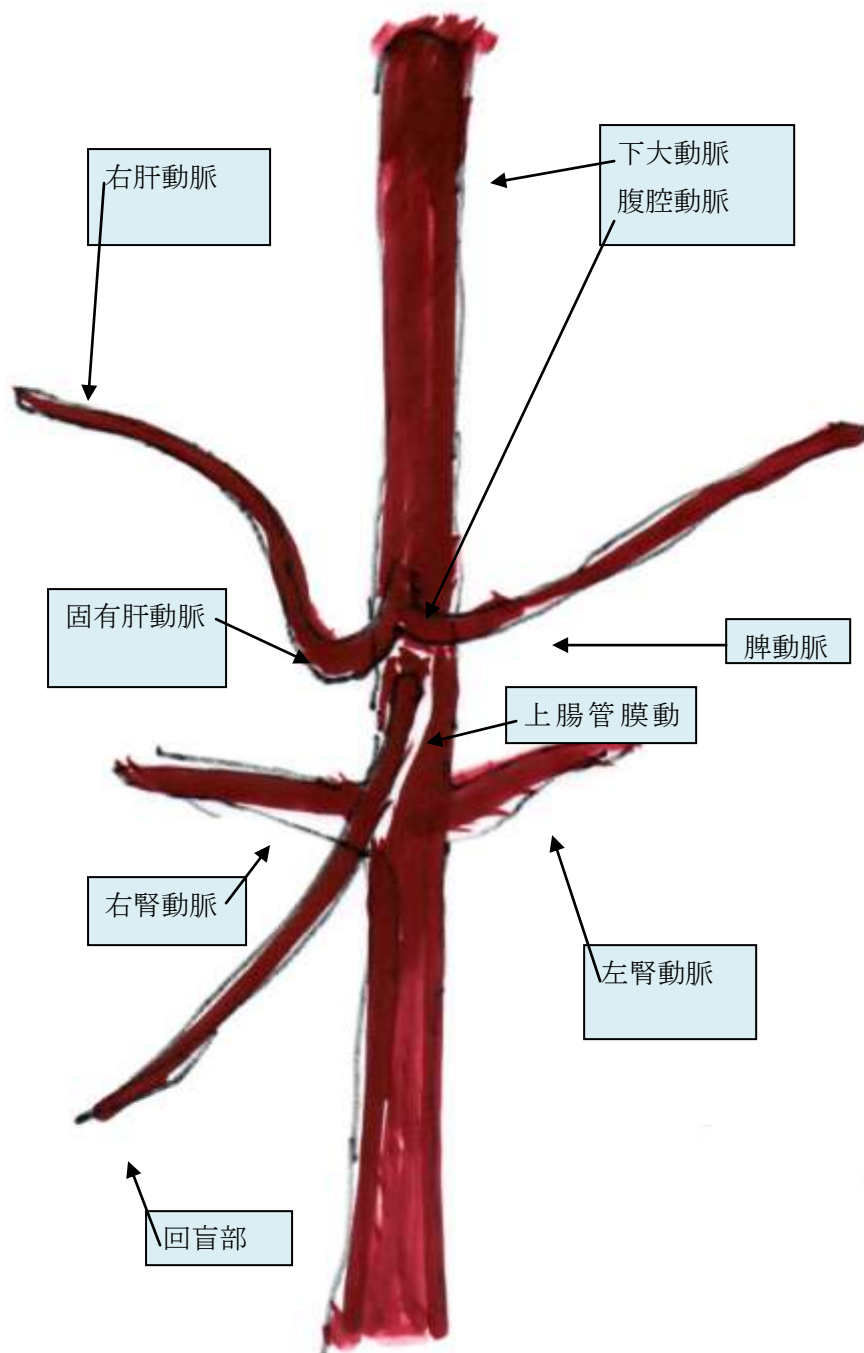


上腹部動脈、静脈、門脈、胆道立体模型の作り方

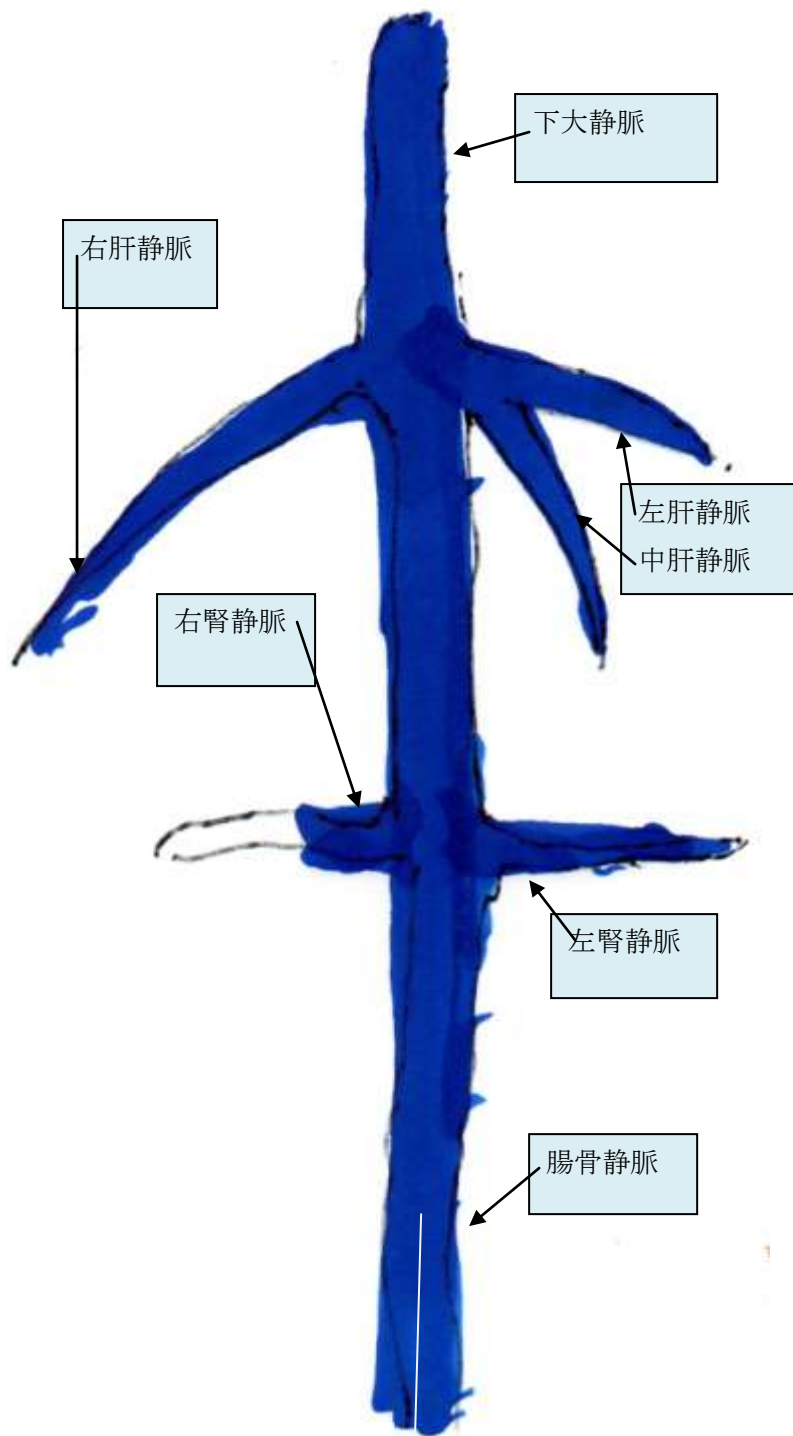
<http://shuzouarakaki.jp>

1 動脈の作成

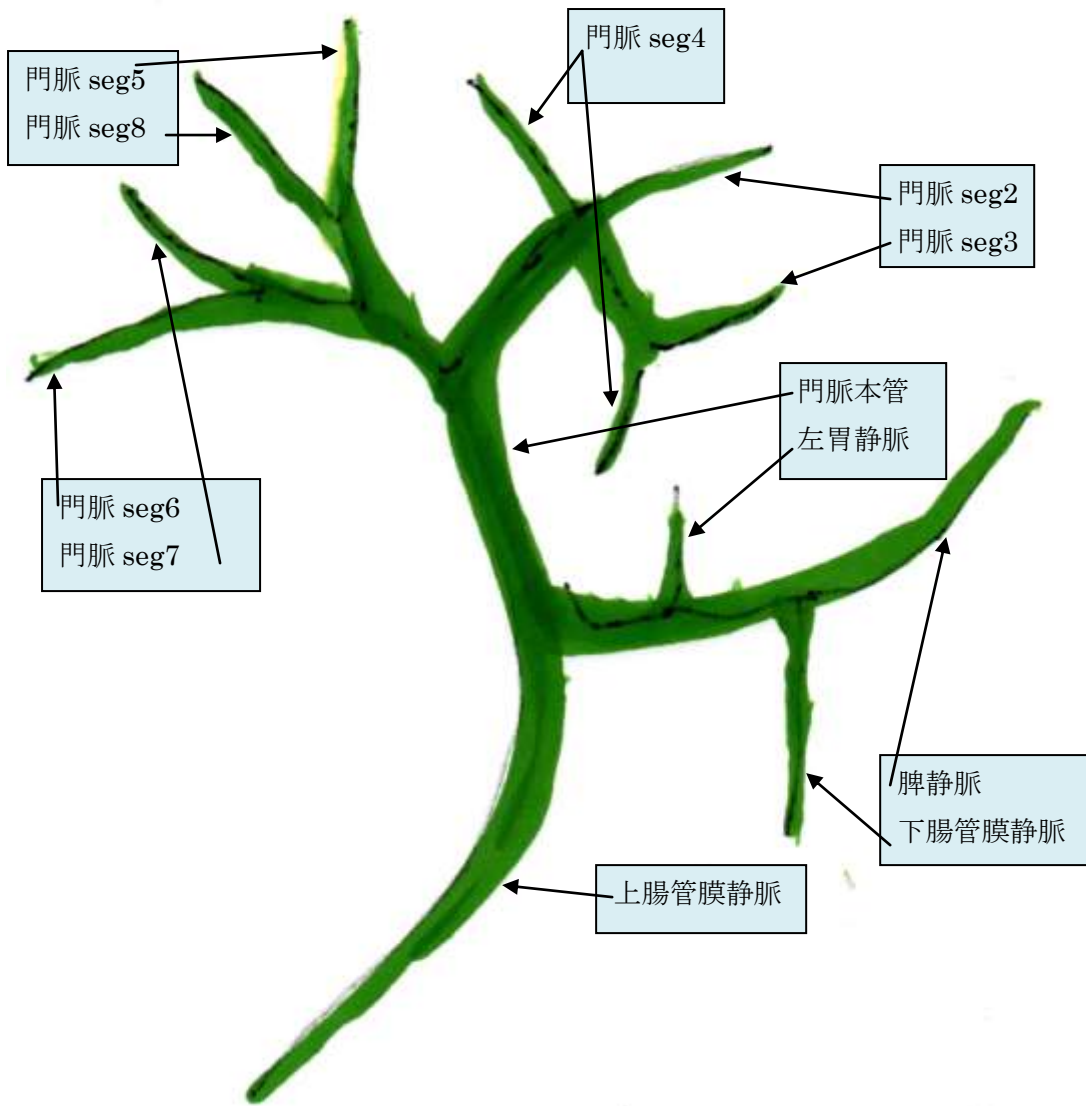
A4 プリント展開図に合わせて屈曲性のある材質（針金）をカット加工し、太さに合わせてテープで肉付け太さを調節します



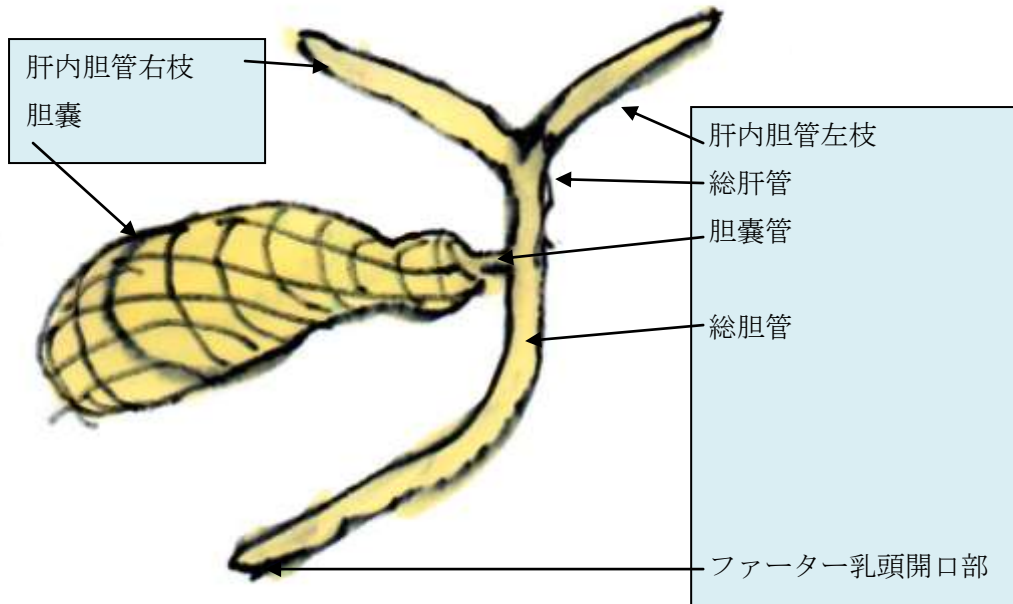
2 静脈の作成



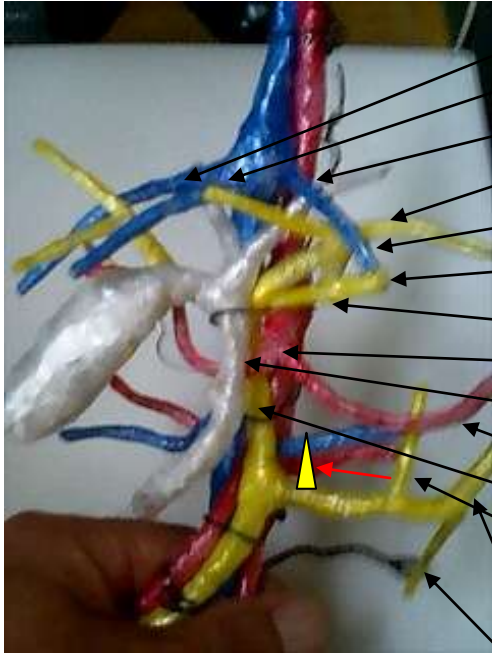
3 門脈の作成



4 胆道の作成



5 組み立て



- 右肝静脈
- 中肝静脈
- 左肝静脈
- 門脈外側後上枝
- 左肝静脈
- 門脈外側前下枝
- ウンビリカルポーション (臍静脈)
- 腹腔動脈
- 総胆管
- 脾動脈
- 門脈本管
- 左胃静脈 (位置が悪い SMV より 10 m m ぐらいの位置)
- 脾静脈



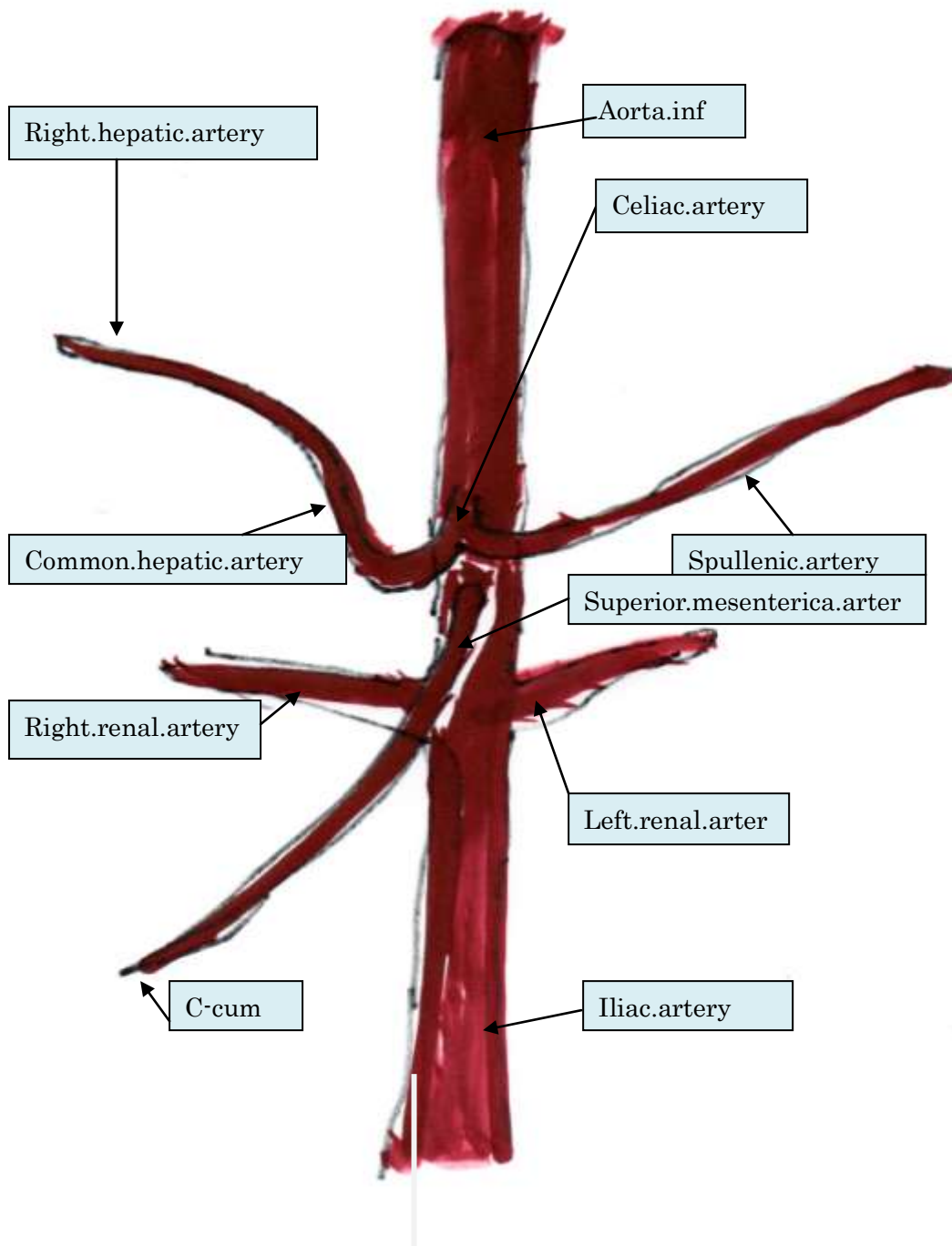
- 下腸管膜静脈
- 門脈右後上区域枝
- 右肝静脈
- 左中肝静脈共通管
- 中肝静脈
- 左肝静脈
- 門脈左外側後上枝
- 3 管合流部
- 門脈内側枝
- 門脈左外側前下枝



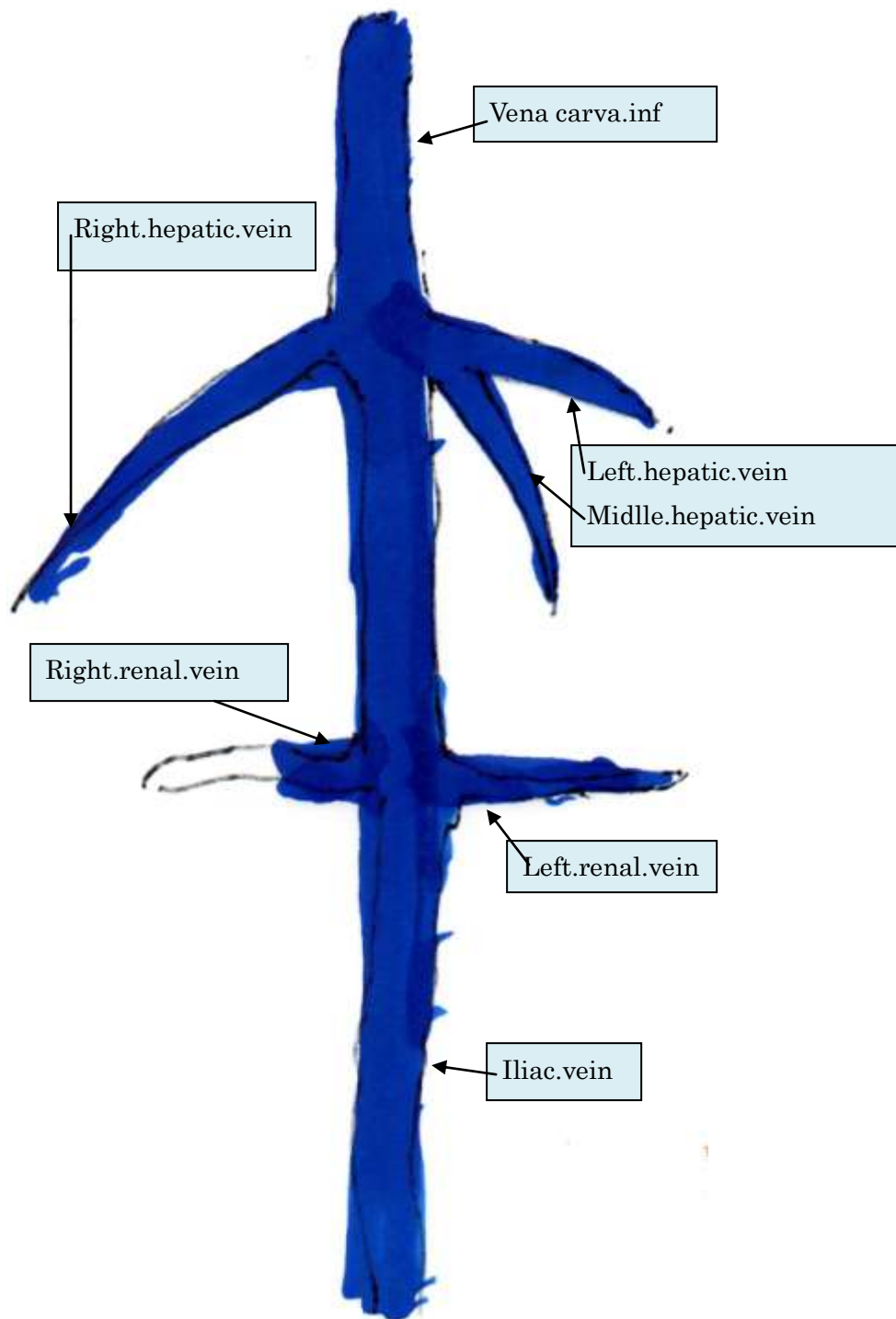
- 3 管合流部
- 背側に下大静脈その上を門脈本管が走行し門脈の上側を右肝動脈が横断しその上を総胆管が走行する

How to make an upper abdominal artery, vein, portal vein, biliary duct solid model

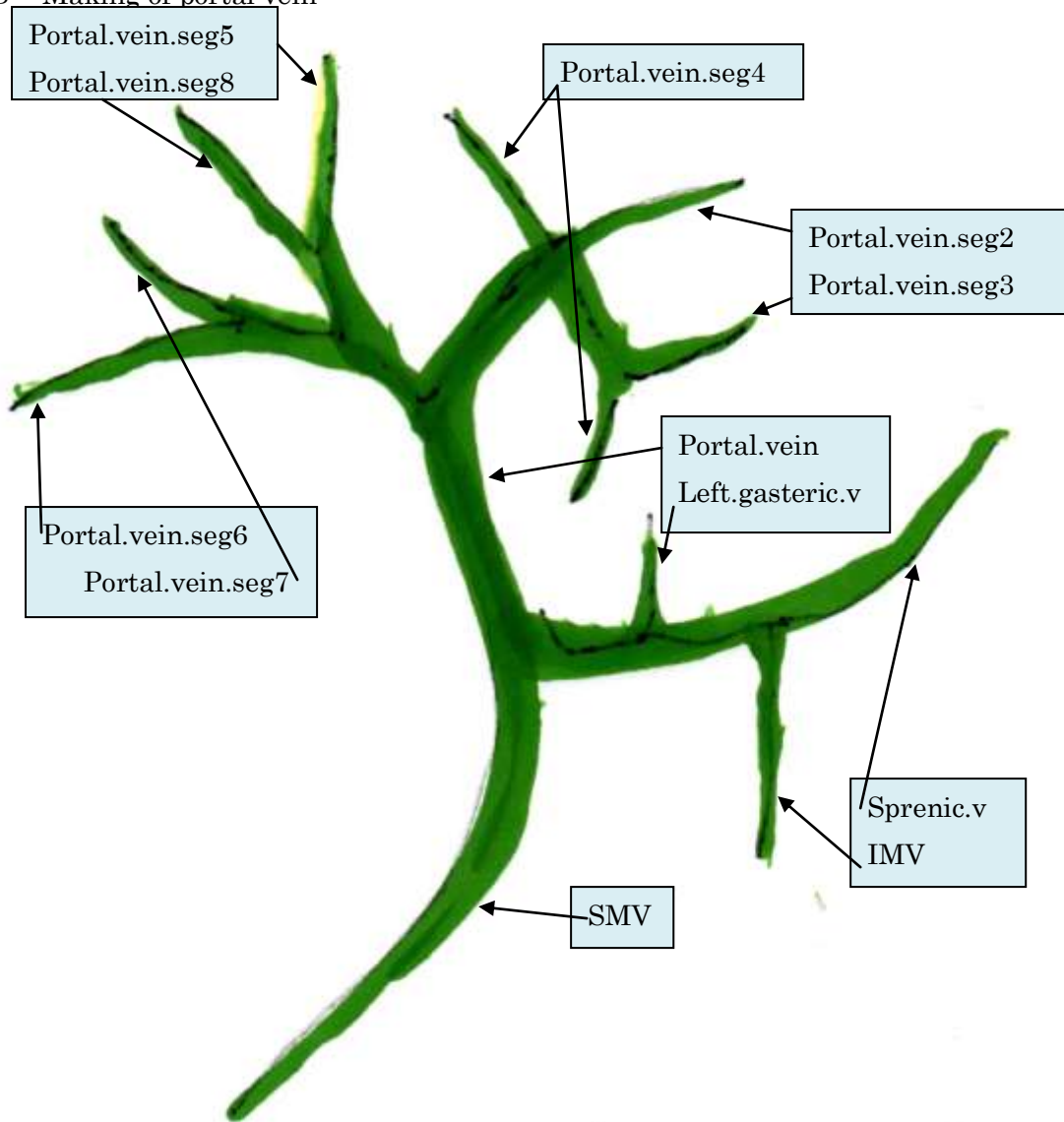
1 Making of artery



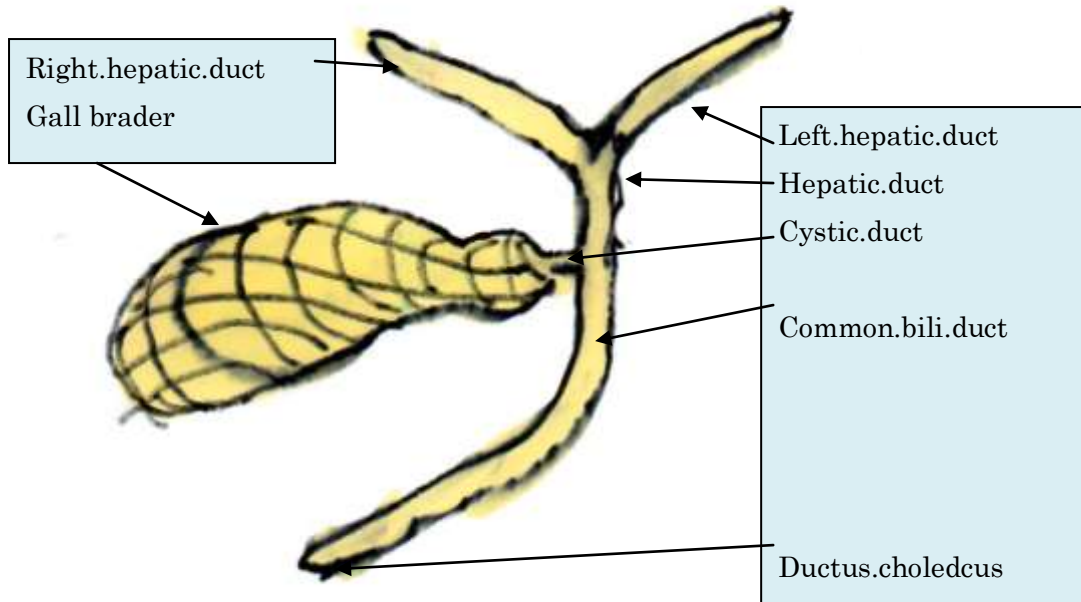
2 Making of vein



3 Making of portal vein



4 Making of biliary tract



5 Assembly



- Right.hepatic.vein
- Middle.hepatic.vein
- Left.hepatic.vein
- Portal.vein.seg2
- Left.hepatic.vein
- Portal.vein.seg2
- U-P
- Celiac.artery
- C B D
- SP.artery
- SP.vein
- LG.vein
- IMA



- Portal.vein.seg 7
- Portal.vein.seg2
- Midle.hepatic.vein
- Left.hepatic.vein
- Portal.vein.seg 2
- Portal.vein.seg 4
- Portal.vein.seg 3



Three tube confluence
 The portal vein and the bile duct parallel run.
 The right hepatic artery crosses the interval. The portal vein and the bile duct